

NEWASIA
ASIAJOINT

Grooved Pipe Fittings

Stainless Steel Catalog



NEWASIA
ASIAJOINT

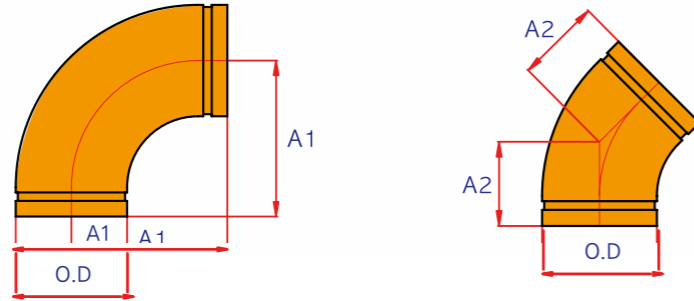
<http://www.ajs.co.kr>



STS Grooved fittings

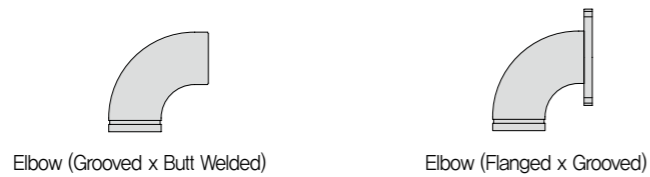
STS Grooved Elbow

Mat'l : STS304 (S10S,S20S)



Nominal Size DN inch	Pipe O,D (mm)	Wall Thick T (mm)	90 Elbow		45 Elbow	
			A1(mm)	Weight(Kg)	A2(mm)	Weight(Kg)
40 1.1/2	48.6	2.8	77	0.4	47	0.3
50 2	60.5	2.8	94	0.6	54	0.3
65	76.3	3	110	0.9	60	0.5
2.1/2	73.0	3	110	0.9	60	0.5
80 3	89.1	3	129	1.3	71	0.7
100 4	114.3	3	160	2.1	84	1.1
125	139.8	3.4	191	3.5	99	1.8
5	141.3	3.4	191	3.5	99	1.8
150	165.2	3.4	229	4.9	115	2.5
6	168.3	3.4	229	4.9	115	2.5
200	216.3	4	305	10.1	150	5
8	219.1	4	305	10.1	150	5
250	267.4	4	381	15.7	181	7.5
10	273.0	4	381	15.7	181	7.5
300	318.5	4.5	457	25.3	219	12.1
12	323.9	4.5	457	25.3	219	12.1

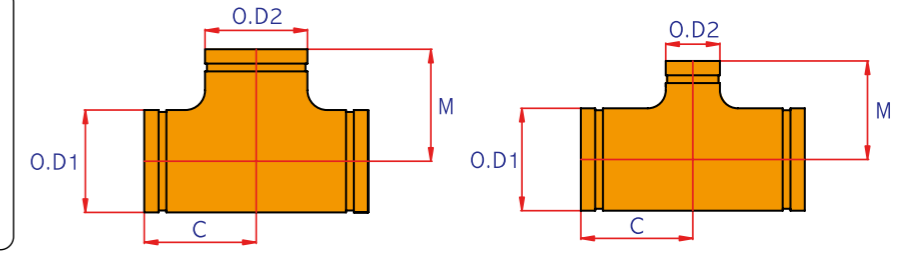
Order made products



STS Grooved Tee

Grooved Outlet

Mat'l : STS304 (S10S,S20S)



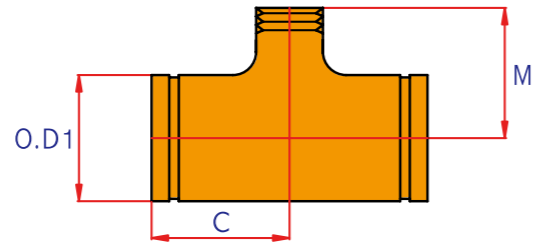
Nominal Size DN inch	Center to End		RUN		Outlet		Weight (Kg)	Nominal Size DN inch	Center to End		RUN		Outlet		Weight (Kg)
	C(mm)	M(mm)	Outside Dia OD1 (mm)	Wall Thick T1 (mm)	Out- side Dia OD2 (mm)	Wall Thick T2 (mm)			C(mm)	M(mm)	Outside Dia OD1 (mm)	Wall Thick T1 (mm)	Out- side Dia OD2 (mm)	Wall Thick T2 (mm)	
50x50 2x2	81.0	81.0	60.5	2.8	60.5	2.8	0.9	200x125	177.8	163.0	216.3	4.0	139.8	3.4	9.5
65x50	94.0	90.0	76.3	3.0	60.5	2.8	1.2	8x5	177.8	163.0	219.1	4.0	141.3	3.4	9.5
2.1/2x2	94.0	90.0	73.0	3.0	60.5	2.8	1.2	200x150	177.8	168.0	216.3	4.0	165.2	3.4	9.8
65x65	94.0	94.0	76.3	3.0	76.3	3.0	1.3	8x6	177.8	168.0	219.1	4.0	168.3	3.4	9.8
2.1/2x2.1/2	94.0	94.0	73.0	3.0	73.0	3.0	1.3	200x200	177.8	180.0	216.3	4.0	216.3	4.0	10.6
80x50 3x2	101.0	93.0	89.1	3.0	60.5	2.8	1.5	8x8	177.8	180.0	219.1	4.0	219.1	4.0	10.6
80x65	101.0	98.0	89.1	3.0	76.3	3.0	1.6	250x125	215.9	215.9	267.4	4.0	139.8	3.4	13.4
3x2.1/2	101.0	98.0	89.1	3.0	73.0	3.0	1.6	10x5	215.9	215.9	273.0	4.0	141.3	3.4	13.4
80x80 3x3	101.0	101.0	89.1	3.0	89.1	3.0	1.7	250x150	215.9	215.9	267.4	4.0	165.2	3.4	13.7
100x50 4x2	125.0	110.0	114.3	3.0	60.5	2.8	2.3	10x6	215.9	215.9	273.0	4.0	168.3	3.4	13.7
100x65	125.0	118.0	114.3	3.0	76.3	3.0	2.4	250x200	215.9	215.9	267.4	4.0	216.3	4.0	14.6
4x2.1/2	125.0	118.0	114.3	3.0	73.0	3.0	2.4	10x8	215.9	215.9	273.0	4.0	219.1	4.0	14.6
100x80 4x3	125.0	121.0	114.3	3.0	89.1	3.0	2.5	250x250	215.9	215.9	267.4	4.0	267.4	4.0	15.4
100x100 4x4	125.0	125.0	114.3	3.0	114.3	3.0	2.6	10x10	215.9	215.9	273.0	4.0	273.0	4.0	15.4
125x65	123.8	116.0	139.8	3.4	76.3	3.0	3.7	300x150	254.0	235.0	318.5	4.5	165.2	3.4	20.6
5x2.1/2	123.8	116.0	141.3	3.4	73.0	3.0	3.7	12x6	254.0	235.0	323.9	4.5	168.3	3.4	20.6
125x80	123.8	120.0	139.8	3.4	89.1	3.0	3.7	300x200	254.0	254.0	318.5	4.5	216.3	4.0	21.4
5x3	123.8	120.0	141.3	3.4	89.1	3.0	3.7	12x8	254.0	254.0	323.9	4.5	219.1	4.0	21.4
125x100	123.8	124.0	139.8	3.4	114.3	3.0	3.9	300x250	254.0	254.0	318.5	4.5	267.4	4.0	22.3
5x4	123.8	124.0	141.3	3.4	114.3	3.0	3.9	12x10	254.0	254.0	323.9	4.5	273.0	4.0	22.3
125x125	123.8	125.0	139.8	3.4	139.8	3.4	4.0	300x300	254.0	254.0	318.5	4.5	318.5	4.5	23.6
150x80	142.9	132.0	165.2	3.4	89.1	3.0	4.9	12x12	254.0	254.0	323.9	4.5	323.9	4.5	23.6
6x3	142.9	132.0	168.3	3.4	89.1	3.0	4.9	350x250	279.4	268.0	355.6	4.8	267.4	4.2	24.7
150x100	142.9	138.0	165.2	3.4	114.3	3.0	5.1	14x10	279.4	268.0	355.6	4.8	273.0	4.2	24.7
6x4	142.9	138.0	168.3	3.4	114.3	3.0	5.1	350x300	279.4	280.0	355.6	4.8	318.5	4.6	25.8
150x125	142.9	144.0	165.2	3.4	139.8	3.4	5.2	14x12	279.4	280.0	355.6	4.8	323.9	4.6	25.8
6x5	142.9	144.0	168.3	3.4	141.3	3.4	5.2	400x250	304.8	300.0	406.4	4.8	267.4	4.2	28.9
150x150	142.9	144.0	165.2	3.4	165.2	3.4	5.6	16x10	304.8	300.0	406.4	4.8	273.0	4.2	28.9
6x6	142.9	144.0	168.3	3.4	168.3	3.4	5.6	400x300	304.8	305.0	406.4	4.8	318.5	4.8	30.2
200x100	177.8	163.0	216.3	4.0	114.3	3.0	9.2	16x12	304.8	305.0	406.4	4.8	323.9	4.8	30.2
8x4	177.8	163.0	219.1	4.0	114.3	3.0	9.2	400x350 16x14	304.8	315.0	406.4	4.8	355.6	4.8	31.5
								450x350 18x14	342.9	340.0	457.2	4.8	355.6	4.8	38.4
								450x400 18x16	342.9	340.0	457.2	4.8	406.4	4.8	40.1
								500x400 20x16	381.0	366.0	508.0	5.5	406.4	4.8	55.0
								500x450 20x18	381.0	379.0	508.0	5.5	457.2	4.8	57.0

* Contact us special size (ANSI)

STS Grooved Tee

Threaded Outlet

Mat'l : STS304 (S10S,S20S)

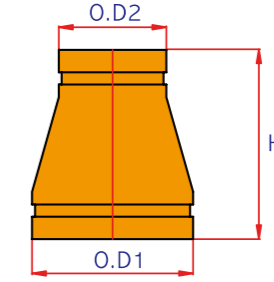


Nominal Size DN inch	Center to End		Run		Outlet	
	C (mm)	M (mm)	Outside Dia OD1 (mm)	Wall Thick T1 (mm)	Threaded Scket Length(mm)	
65 2.1/2	15 1/2	94.0	84.0	76.3 73.0	3.0	34.0
	20 3/4	94.0	85.0	76.3 73.0	3.0	36.0
	25 1	94.0	92.0	76.3 73.0	3.0	43.0
	32 1.1/4	94.0	97.0	76.3 73.0	3.0	48.0
	40 1.1/2	94.0	97.0	76.3 73.0	3.0	48.0
	50 2	94.0	107.0	76.3 73.0	3.0	56.0
80 3	15 1/2	101.0	90.0	89.1	3.0	34.0
	20 3/4	101.0	93.0	89.1	3.0	36.0
	25 1	101.0	98.0	89.1	3.0	43.0
	32 1.1/4	101.0	103.0	89.1	3.0	48.0
	40 1.1/2	101.0	103.0	89.1	3.0	48.0
	50 2	101.0	113.0	89.1	3.0	58.0
100 4	15 1/2	125.0	103.0	114.3	3.0	34.0
	20 3/4	125.0	106.0	114.3	3.0	36.0
	25 1	125.0	111.0	114.3	3.0	43.0
	32 1.1/4	125.0	116.0	114.3	3.0	48.0
	40 1.1/2	125.0	116.0	114.3	3.0	48.0
	50 2	125.0	126.0	114.3	3.0	58.0
125 5	15 1/2	123.8	115.0	139.8 141.3	3.4	34.0
	20 3/4	123.8	118.0	139.8 141.3	3.4	36.0
	25 1	123.8	123.0	139.8 141.3	3.4	43.0
	32 1.1/4	123.8	128.0	139.8 141.3	3.4	48.0
	40 1.1/2	123.8	128.0	139.8 141.3	3.4	48.0
	50 2	123.8	138.0	139.8 141.3	3.4	58.0
150 6	15 1/2	142.9	128.0	165.2 168.3	3.4	34.0
	20 3/4	142.9	131.0	165.2 168.3	3.4	36.0
	25 1	142.9	136.0	165.2 168.3	3.4	43.0
	32 1.1/4	142.9	141.0	165.2 168.3	3.4	48.0
	40 1.1/2	142.9	141.0	165.2 168.3	3.4	48.0
	50 2	142.9	151.0	165.2 168.3	3.4	58.0

STS Grooved Reducer

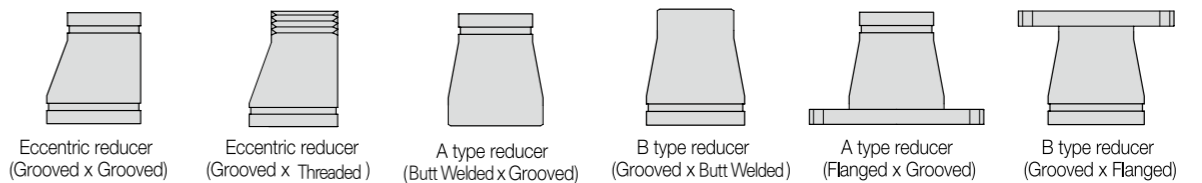
Grooved Outlet

Mat'l : STS304 (S10S,S20S)



Nominal Size DN inch	End to End H (mm)	Large End		Small End		Weight (Kg)	Nominal Size DN inch	End to End H (mm)	Large End		Small End		Weight (Kg)
		Outside Dia OD1 (mm)	Wall Thick T1 (mm)	Outside Dia OD2 (mm)	Wall Thick T2 (mm)				Outside Dia OD1 (mm)	Wall Thick T1 (mm)	Outside Dia OD2 (mm)	Wall Thick T2 (mm)	
65x50	113	76.3	3.0	60.5	2.8	0.5	250x150	220	267.4	4.0	165.2	3.4	4.4
2.1/2x2	113	73.0	3.0	60.5	2.8	0.5	10x6	220	273.0	4.0	168.3	3.4	4.4
80x50	120	89.1	3.0	60.5	2.8	0.6	250x200	220	267.4	4.0	216.3	4.0	4.8
3x2	120	89.1	3.0	73.0	3.0	0.6	10x8	220	273.0	4.0	219.1	4.0	4.8
100x50	135	114.3	3.0	60.5	2.8	0.6	300x150	240	318.5	4.5	165.2	3.4	6.4
4x2	135	114.3	3.0	73.0	3.0	0.8	12x6	240	323.9	4.5	168.3	3.4	6.4
100x65	135	114.3	3.0	76.3	3.0	0.8	300x200	240	318.5	4.5	216.3	4.0	6.8
4x2.1/2	135	114.3	3.0	73.0	3.0	0.8	12x8	240	323.9	4.5	219.1	4.0	6.8
100x80	135	114.3	3.0	89.1	3.0	0.9	300x250	240	318.5	4.5	267.4	4.0	7.2
125x65	161	139.8	3.4	76.3	3.0	1.4	12x10	240	323.9	4.5	273.0	4.0	7.2
5x2.1/2	161	141.3	3.4	73.0	3.0	1.4	350x200	330.2	355.6	4.8	216.3	3.8	11.2
125x80	161	139.8	3.4	89.1	3.0	1.4	14x8	330.2	355.6	4.8	219.1	3.8	11.2
5x3	161	141.3	3.4	89.1	3.0	1.4	350x250	330.2	355.6	4.8	267.4	4.2	12.1
125x100	161	139.8	3.4	114.3	3.0	1.5	14x10	330.2	355.6	4.8	273.0	4.2	12.1
5x4	161	141.3	3.4	114.3	3.0	1.5	350x300	330.2	355.6	4.8	318.5	4.6	13.2
150x80	171	165.2	3.4	89.1	3.0	1.7	14x12	330.2	355.6	4.8	323.9	4.6	13.2
6x3	171	168.3	3.4	89.1	3.0	1.7	400x250	355.6	406.4	4.8	267.4	4.2	13.6
150x100	171	165.2	3.4	114.3	3.0	1.8	16x10	355.6	406.4	4.8	273.0	4.2	13.6
6x4	171	168.3	3.4	114.3	3.0	1.8	400x300	355.6	406.4	4.8	318.5	4.6	14.8
150x125	171	165.2	3.4	139.8	3.4	2.0	16x12	355.6	406.4	4.8	323.9	4.6	14.8
6x5	171	168.3	3.4	141.3	3.4	2.0	400x350	355.6	406.4	4.8	355.6	4.8	16.1
200x100	191	216.3	4.0	114.3	3.0	3.0	16x14	355.6	406.4	4.8	355.6	4.8	16.1
8x4	191	219.1	4.0	114.3	3.0	3.0	450x300	381	457.2	4.8	318.5	4.6	16.5
200x125	191	216.3	4.0	139.8	3.4	3.1	18x12	381	457.2	4.8	323.9	4.6	16.5
8x5	191	219.1	4.0	141.3	3.4	3.1	450x350	381	457.2	4.8	355.6	4.8	17.9
200x150	191	216.3	4.0	165.2	3.4	3.3	18x14	381	457.2	4.8	355.6	4.8	17.9
250x125	220	267.4	4.0	139.8	3.4	4.3	450x400	381	457.2	4.8	406.4	4.8	19.5
10x5	220	273.0	4.0	141.3	3.4	4.3	500x350	508	508.0	5.5	355.6	4.8	28.2
							20x14	508	508.0	5.5	355.6	4.8	28.2
							500x400	508	508.0	5.5	406.4	4.8	30.0
							20x16	508	508.0	5.5	406.4	4.8	30.0
							22x18	508	558.8	5.5	457.2	4.8	33.3

Order made products

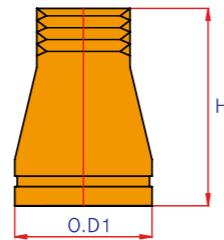


Grooved Joint
 Ductile fittings
 Carbon Grooved fittings
 STS Grooved fittings
 New method for grooved joint system
 Grooved machine and spare parts
 Technical information
 Piping manual
 Material Approval Sheets

STS Grooved Reducer

Threaded Outlet

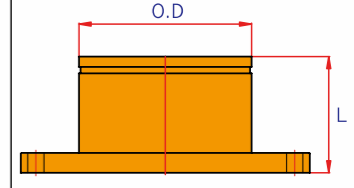
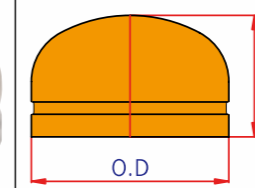
Mat'l : STS304 (S10S,S20S)



Nominal Size DN inch	End to End H(mm)	Large End		Small End	Nominal Size DN inch	End to End H(mm)	Large End		Small End		
		Outside Dia OD1 (mm)	Wall Thick T1 (mm)	Threaded Soket Length(mm)			Outside Dia OD1 (mm)	Wall Thick T1 (mm)	Threaded Soket Length(mm)		
65 2 1/2	15 1/2	80.0	76.3 73.0	3.0	34.0	125 5	15 1/2	115.0	139.8 141.3	3.4	34.0
	20 3/4	88.0	76.3 73.0	3.0	36.0		20 3/4	118.0	139.8 141.3	3.4	36.0
	25 1	148.0	76.3 73.0	3.0	43.0		25 1	123.0	139.8 141.3	3.4	43.0
	32 1 1/4	153.0	76.3 73.0	3.0	48.0		32 1 1/4	128.0	139.8 141.3	3.4	48.0
	40 1 1/2	153.0	76.3 73.0	3.0	48.0		40 1 1/2	128.0	139.8 141.3	3.4	48.0
	50 2	161.0	76.3 73.0	3.0	56.0		50 2	202.0	139.8 141.3	3.4	56.0
80 3	15 1/2	100.0	89.1	3.0	34.0	150 6	15 1/2	125.0	165.2 168.3	3.4	34.0
	20 3/4	103.0	89.1	3.0	36.0		20 3/4	128.0	165.2 168.3	3.4	36.0
	25 1	108.0	89.1	3.0	43.0		25 1	133.0	165.2 168.3	3.4	43.0
	32 1 1/4	153.0	89.1	3.0	48.0		32 1 1/4	138.0	165.2 168.3	3.4	48.0
	40 1 1/2	153.0	89.1	3.0	48.0		40 1 1/2	138.0	165.2 168.3	3.4	48.0
	50 2	161.0	89.1	3.0	56.0		50 2	148.0	165.2 168.3	3.4	56.0
100 4	15 1/2	109.0	114.3	3.0	34.0						
	20 3/4	112.0	114.3	3.0	36.0						
	25 1	117.0	114.3	3.0	43.0						
	32 1 1/4	122.0	114.3	3.0	48.0						
	40 1 1/2	168.0	114.3	3.0	48.0						
	50 2	176.0	114.3	3.0	56.0						

STS Grooved Cap/STS Grooved Flange Adapter

Mat'l : STS304 (S10S,S20S)



Cap

Flange Adapter

Nominal Size DN inch	Outside Dia OD (mm)	E (mm)	Wall Thick T (mm)	Weight (Kg)	Normal Pressure(10K)							High Pressure(20K)			
					Nominal Size DN inch	Out-side Dia OD (mm)	L (mm)	Bolt hole		Wall Thick T (mm)	Weight (Kg)	Bolt hole		Wall Thick T (mm)	Weight (Kg)
								Hole quantity (ea)	Di-amer (Ø)			Hole quantity (ea)	Diam-eter (Ø)		
40 1 1/2	48.6	45	2.8	0.2	40 1 1/2	48.6	75	4	19	2.8	1.7	4.0	19.0	3.0	2.1
50 2	60.5	50	2.8	0.2	50 2	60.5	80	4	19	2.8	2.0	8.0	19.0	3.5	2.3
65 2 1/2	76.3	55	3.0	0.4	65 2 1/2	76.3	85	4	19	3.0	2.8	8.0	19.0	3.5	3.1
80 3	89.1	65	3.0	0.5	80 3	89.1	85	8	19	3.0	2.9	8.0	23.0	4.0	4.5
100 4	114.3	74	3.0	0.7	100 4	114.3	90	8	19	3.0	3.4	8.0	23.0	4.0	5.9
125 5	139.8	80	3.4	1.1	125 5	139.8	95	8	23	3.4	5.1	8.0	25.0	5.0	9.4
150 6	165.2	90	3.4	1.4	150 6	165.2	100	8	23	3.4	7.0	12.0	25.0	5.0	12.1
200 8	216.3	101.6	4.0	2.8	200 8	216.3	115	12	23	4.0	9.4	12.0	25.0	6.5	16.5
250 10	267.4	127	4.0	4.0	250 10	267.4	120	12	25	4.0	13.0	12.0	27.0	6.5	27.0
300 12	318.5	152.4	4.5	6.4	300 12	318.5	120	16	25	4.5	14.3	16.0	27.0	6.5	31.9
350 14	355.6	165.1	4.8	8.0	350 14	355.6	190	16	25	4.8	24.1	16.0	33.0	8.0	49.2
400 16	406.4	177.8	4.8	10.1	400 16	406.4	220	16	27	4.8	37.9	16.0	33.0	8.0	69.0
450 18	457.2	203.2	4.8	12.9	450 18	457.2	225	20	27	4.8	47.4	20.0	33.0	8.0	86.0
500 20	508.0	228.6	5.5	18.5	500 20	508.0	260	20	27	5.5	55.7	20.0	33.0	9.5	103.0